

SUSE[®] Linux Enterprise 11

Platform for SAP
SLES Basic Installation

Fabian Herschel

SUSE Linux GmbH

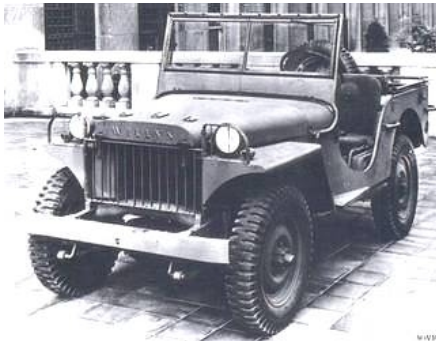
Lars Pinne

SUSE Linux GmbH



SUSE® Linux Enterprise Server Installation Goal

- Install SUSE Linux Enterprise 11 platform for SAP simple stack
 - later use is possible with or without HA cluster
- Configure system for workshop needs
 - concept and components are the same as for production
- Reproduceable installation
 - step-by-step minimizes risk for errors



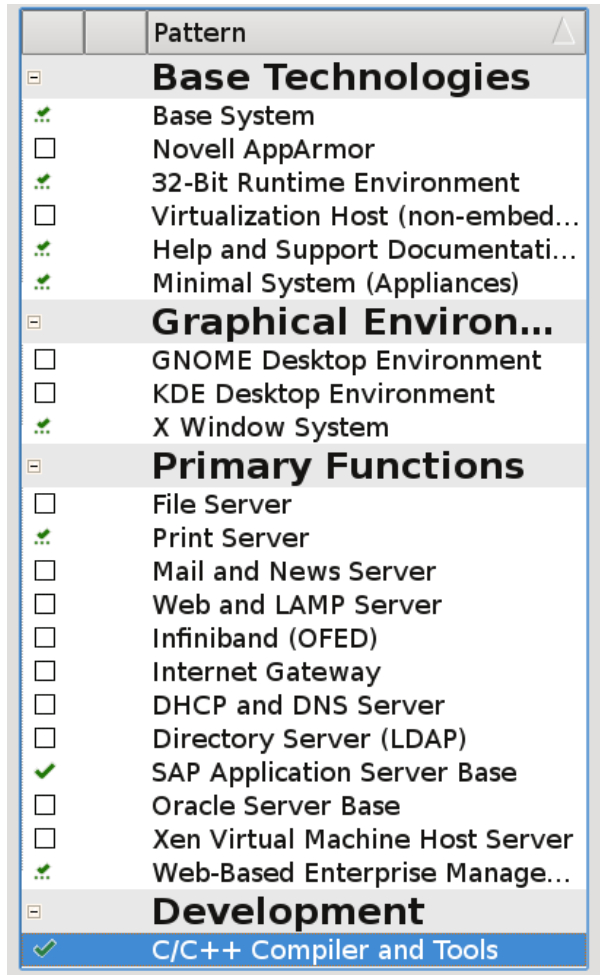
<http://www.4-the-love-of-jeps.com>

Partitioning

1. /boot	128MB	ext2	noatime
2. swap	2* RAM	swap	(for <32GB RAM)
3. /	16GB	ext3	noatime
4. /var	rest	ext3	noatime,barrier=0,data=writeback

- IO scheduler deadline, edit /etc/init.d/boot.local after installation.
- Less filesystem checks on boot, run tune2fs -c0 after installation.
- For recommended swap space see note #1597355.

Software



- + Base pattern
- + X pattern
- + 32-bit compatibility pattern
- + Print server pattern
- + SAP server pattern
- + C/C++ compiler pattern
- No AppArmor pattern
- No Gnome pattern
- + IBM Java 1.4.2
- + High availability add-on pattern*
- + ClusterTools2 package*

* if available, otherwise install later from separate install source.

SLES11 + SLE11-HA needs ca. 4.5 GB disk space



Software – SAP server pattern

- SUSE delivers with the pattern
 - **sapconf**
 - prepares OS for SAP needs
 - **sap-locale**
 - contains special code pages
 - only needed for non-unicode systems
 - if you plan to run SAP application servers on SLES together with app. servers on another OS, see notes #1069443, #187864 and #1067221.
- SAP delivers
 - **saplocales 2.4.3**
 - contains additional legacy code pages
 - only needed for non-unicode systems, in special cases
 - SAP installer warning can be ignored for unicode systems

Software – Java

- SUSE delivers with SUSE Linux Enterprise Server 11
 - IBM Java 1.4.2 sr13.x
 - $x \geq 3 ; x = f(t)$
 - see notes #1172419, #941595, and #861215
 - not supported after 12.10.2012
- SAP delivers
 - SAP JVM 4
 - see notes #1172419 and #1495160

Network

- No Firewall
- No Network Manager
- No IP Forwarding
- Use eth0, static network configuration
 - see workbook or whiteboard for IP address, netmask, gateway, nameserver
- Add eth1 after installation

Runlevel, Services

- Runlevel 3
 - No slpd
 - No postfix
 - No boot.dmraid
 - No boot.md
 - No alsasound
 - No uidd *
- + ntp, edit /etc/ntp.conf after installation
- Check for boot.sysstat, boot.clock, boot.sapconf, boot.multipath, multipathd, mdadm.
 - *process is started on demand, see note #1310037.

Miscellaneous

- System language en_US
- System clock UTC (recomm.) or localtime

See note #1310037.

SUSE® Linux Enterprise Server Installation Procedure

- Manual base installation of node 1
 - use the expert dialogs
- Adapting configuration of node1
 - eth1, network
 - runlevel services
 - storage details
 - misc
- Checking configuration
- Collecting configuration on node 1 for node 2

Lab Exercise 1: SUSE® Linux Enterprise Server Installation

Please follow the instruction given in the workbook.





Corporate Headquarters
Maxfeldstrasse 5
90409 Nuremberg
Germany

+49 911 740 53 0 (Worldwide)
www.suse.com

Join us on:
www.opensuse.org

Unpublished Work of SUSE. All Rights Reserved.

This work is an unpublished work and contains confidential, proprietary and trade secret information of SUSE. Access to this work is restricted to SUSE employees who have a need to know to perform tasks within the scope of their assignments. No part of this work may be practiced, performed, copied, distributed, revised, modified, translated, abridged, condensed, expanded, collected, or adapted without the prior written consent of SUSE. Any use or exploitation of this work without authorization could subject the perpetrator to criminal and civil liability.

General Disclaimer

This document is not to be construed as a promise by any participating company to develop, deliver, or market a product. It is not a commitment to deliver any material, code, or functionality, and should not be relied upon in making purchasing decisions. SUSE makes no representations or warranties with respect to the contents of this document, and specifically disclaims any express or implied warranties of merchantability or fitness for any particular purpose. The development, release, and timing of features or functionality described for SUSE products remains at the sole discretion of SUSE. Further, SUSE reserves the right to revise this document and to make changes to its content, at any time, without obligation to notify any person or entity of such revisions or changes. All SUSE marks referenced in this presentation are trademarks or registered trademarks of Novell, Inc. in the United States and other countries. All third-party trademarks are the property of their respective owners.

