



---

**REVISION HISTORY**

NUMBER	DATE	DESCRIPTION	NAME
2.7.4	2016-03-09	Current release of Network UPS Tools (NUT).	
2.6.0	2011-01-14	First release of AsciiDoc documentation for Network UPS Tools (NUT).	

---

---

## Contents

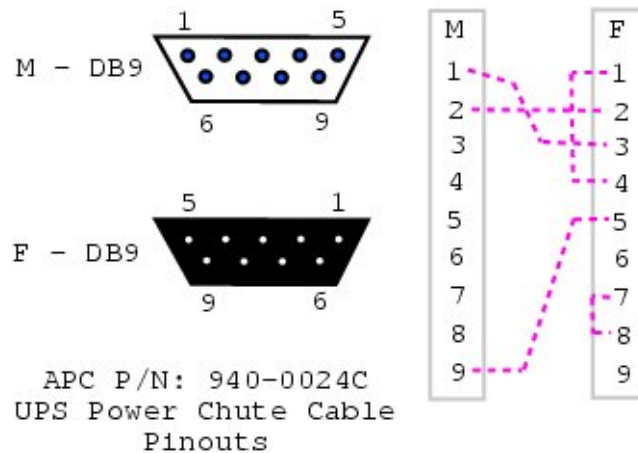
<b>1</b>	<b>APC</b>	<b>1</b>
1.1	940-0024C clone . . . . .	1
1.2	940-0024E clone . . . . .	1
1.3	940-0024C clone for Macs . . . . .	1
<b>2</b>	<b>Belkin</b>	<b>2</b>
2.1	OmniGuard F6C***-RKM . . . . .	2
<b>3</b>	<b>Eaton</b>	<b>2</b>
3.1	MGE Office Protection Systems . . . . .	2
3.1.1	DB9-DB9 cable (ref 66049) . . . . .	2
3.1.2	DB9-RJ45 cable . . . . .	3
3.1.3	NMC DB9-RJ45 cable . . . . .	4
3.1.4	USB-RJ45 cable . . . . .	4
3.1.5	DB9-RJ12 cable . . . . .	5
3.2	Powerware LanSafe . . . . .	7
3.3	SOLA-330 . . . . .	7
<b>4</b>	<b>HP - Compaq</b>	<b>8</b>
4.1	Older Compaq UPS Family . . . . .	8
<b>5</b>	<b>Phoenixtec (Best Power)</b>	<b>8</b>
<b>6</b>	<b>Tripp-Lite</b>	<b>9</b>

---

## 1 APC

### 1.1 940-0024C clone

From D. Stimits



#### Note

The original 940-0024C diagram was contributed by Steve Draper.

### 1.2 940-0024E clone

Reported by Jonathan Laventhol

This cable is said to use the same wiring as 940-0024C clone.

### 1.3 940-0024C clone for Macs

From Miguel Howard



## 2 Belkin

### 2.1 OmniGuard F6C\*\*\*-RKM

From "Daniel"

A straight-through RS-232 cable (with pins 2-7 connected through) should work with the following models:

- F6C110-RKM-2U
- F6C150-RKM-2U
- F6C230-RKM-2U
- F6C320-RKM-3U

## ● RS232

Character based protocol



## 3 Eaton

Documents in this section are provided courtesy of Eaton.

### 3.1 MGE Office Protection Systems

The three first cables also applies to MGE UPS SYSTEMS and Eaton.

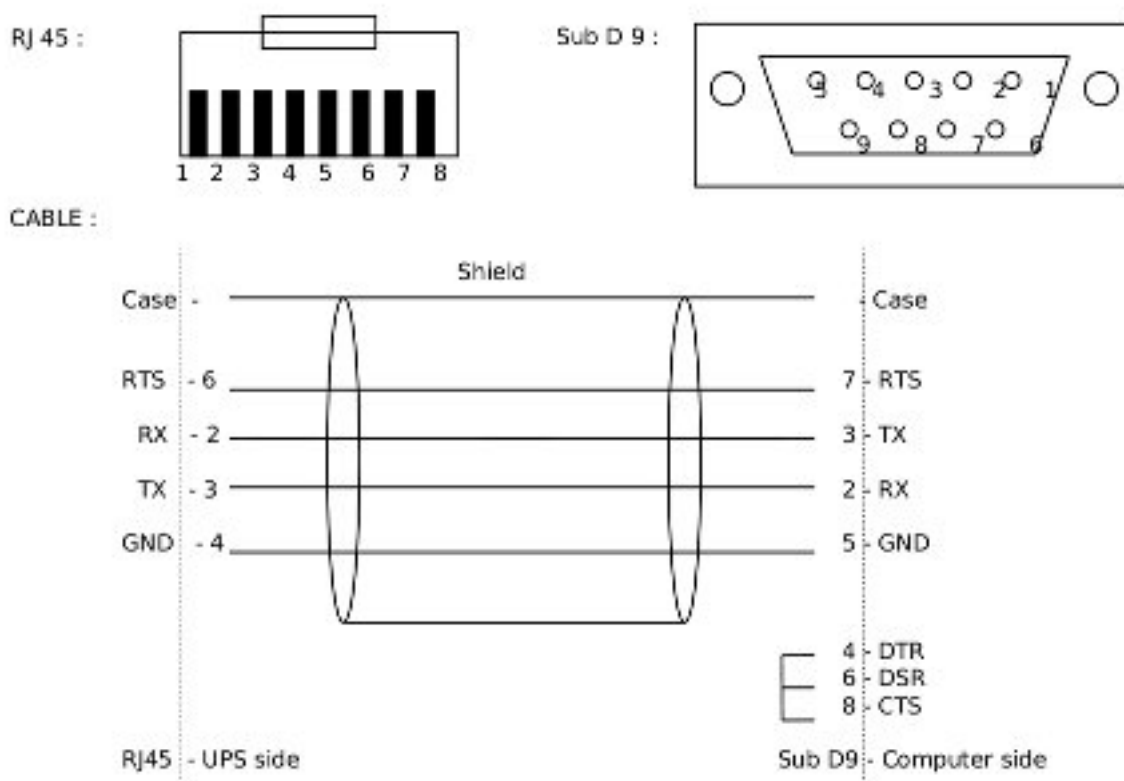
#### 3.1.1 DB9-DB9 cable (ref 66049)

This is the standard serial cable, used on most units.



### 3.1.2 DB9-RJ45 cable

This cable is used on the more recent models, including Ellipse MAX, Protection Station, ...



### 3.1.3 NMC DB9-RJ45 cable

The following applies to the MGE 66102 NMC (Network Management Card), and possibly other models. The NMC connection is an 8P8C RJ45-style jack.

Signal	PC	NMC
	1,4,6	
TxD	2	3
RxD	3	6
GND	5	4
	7,8	
	shield	shield

### 3.1.4 USB-RJ45 cable

This cable is used also on the more recent models, including Ellipse MAX, Protection Station, ...

CABLE :

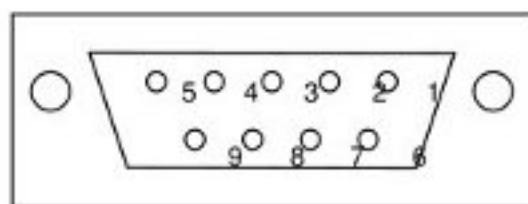


3.1.5 DB9-RJ12 cable

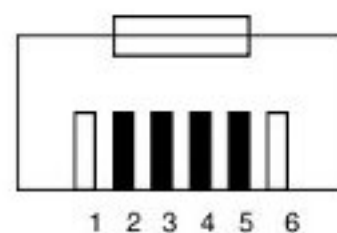
This cable is used on some older Ellipse models.



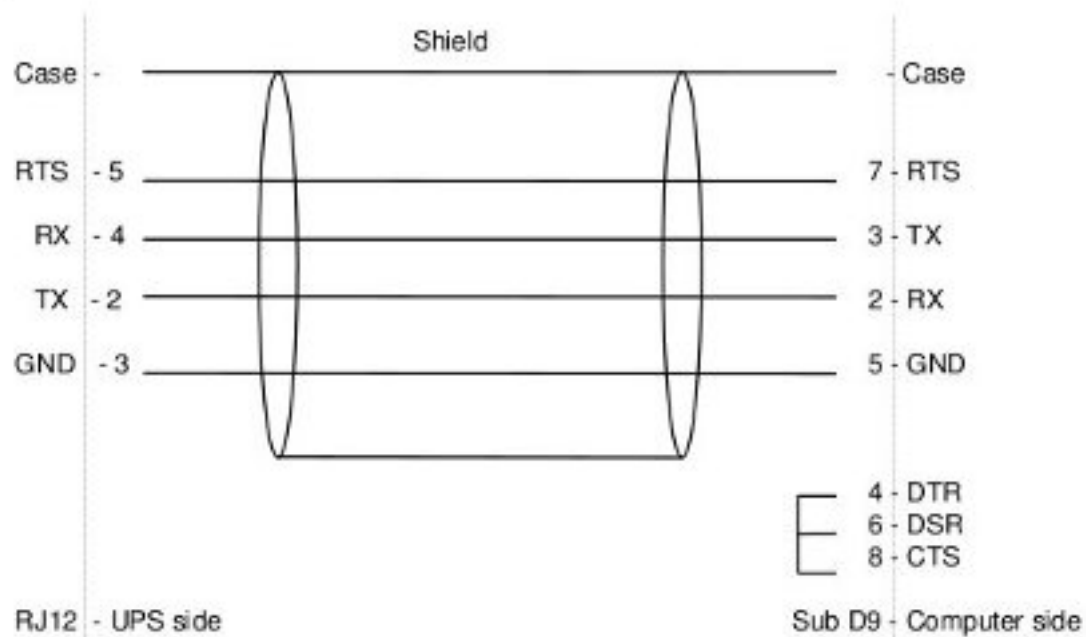
Sub D 9 :



RJ 12 :



CABLE :



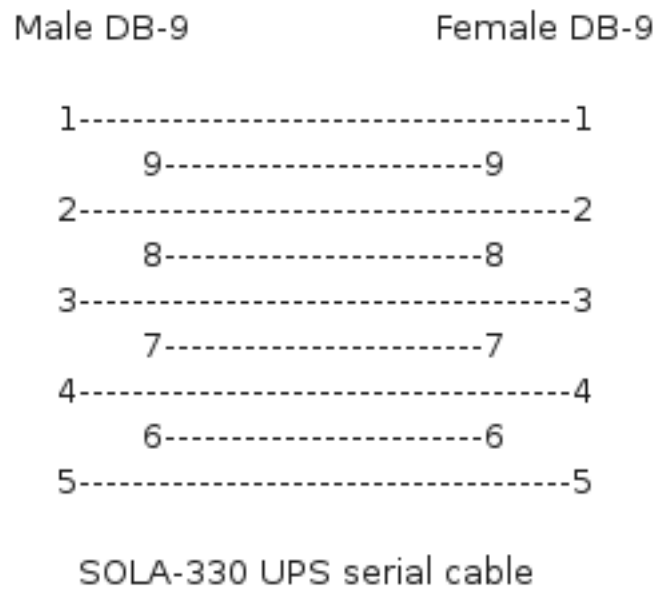
### 3.2 Powerware LanSafe

LanSafe for  
**3115 / 5105 / 5119 / 9110 / 9150 / 9305**



### 3.3 SOLA-330

Just uses a normal serial cable, with pin 1-1 through to 9-9.



## 4 HP - Compaq

### 4.1 Older Compaq UPS Family

This cable can be used with the following models:

T700, T1000, T1500, T1500j, T700h, T1000h, T1500h, R1500, R1500j, R1500h, T2000, T2000j, T2400h, T2400h-NA, R3000 / R3000j, R3000h, R3000h-International, R3000h-NA, R6000h-NA, R6000i, R6000j.

UPS                      PC    9 pin connector

1	-----	3
2	-----	2
		4 - \
4	-----	5
		6 - /
6	-----	7

Contributed by Kjell Claesson and Arnaud Quette.

## 5 Phoenixtec (Best Power)

Many Best Power units (including the Patriot Pro II) have a female DB-9 socket with a non-standard pinout.

Signal	PC	UPS
	1,4,6	NC
TxD	2	2
RxD	3	1
GND	5	4
	7,8	NC

Sources:

- [http://pinoutsguide.com/UPS/best\\_power\\_pinout.shtml](http://pinoutsguide.com/UPS/best_power_pinout.shtml)
- [http://lit.powerware.com/ll\\_download.asp?file=m\\_patriotproii\\_jan99.pdf](http://lit.powerware.com/ll_download.asp?file=m_patriotproii_jan99.pdf)
- Stan Gammons

## 6 Tripp-Lite

From Tripp-Lite, via Bryan Kolodziej

This cable (black 73-0844 cable) is used on various models, using the "Lan 2.2 interface" and the genericups driver (upstype=5).

